

# Revolutionary

The largest and most preferred health system in central Ohio built a better health plan



## Affordability

Reducing the cost of healthcare without compromise creates unparalleled value.



## Accessibility

Offering more ways to access high-quality care.



## Simplicity

Delivering a straightforward, integrated and personal member experience that maintains 95% member satisfaction.

## Affordability

Local savings. Greater value without compromise

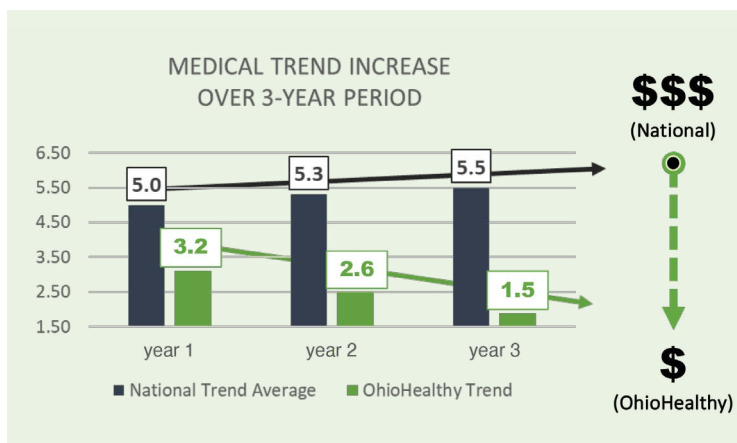
How do we do it?



**Lower cost:** lower unit, plan, out of pocket, outpatient/inpatient services.



**Better medical trend:** OhioHealthy medical trend outperforms the national average.



The power of health plan and health provider working together

## Accessibility

### OHIOHEALTHY PREMIER NETWORK

#### FAST FACTS



**More than 6,000**  
Providers



**9** Behavioral Health  
Facilities



Central Ohio Primary  
Care (**COPC**)



**22** Hospitals



Over **400** Ancillaries



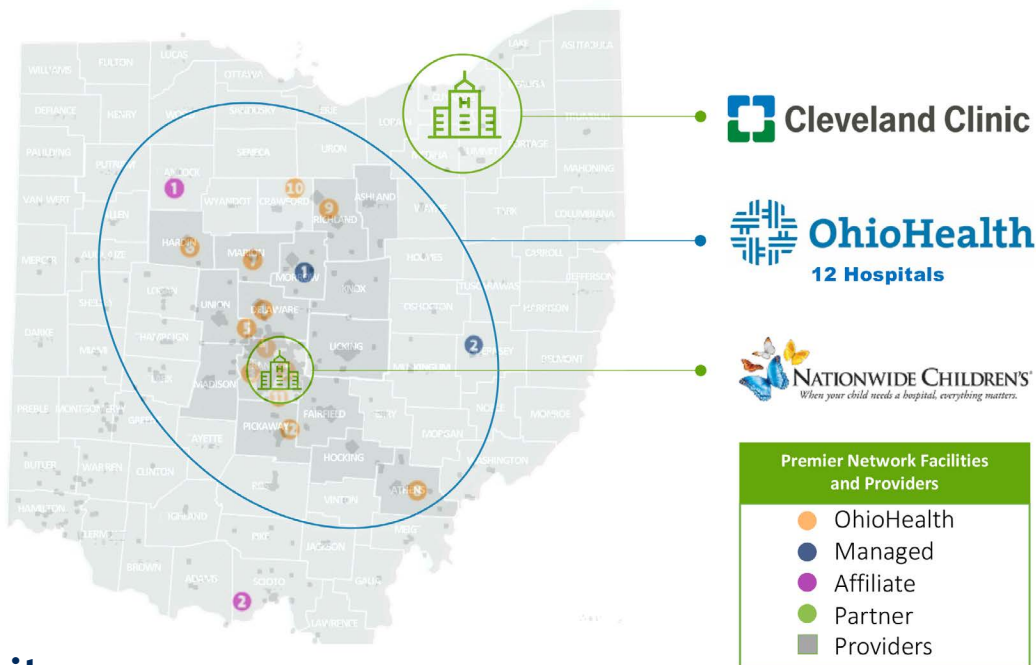
**Cleveland Clinic**



**Nationwide**  
Children's



Clinically Integrated  
Network (**CIN**)



## Simplicity

**Beyond lower costs, we're delivering more value to your employees**

OhioHealth<sup>y</sup> is challenging the status quo of fragmented healthcare with one contact for employers and a single-source for end-to-end high-quality care and member support.

Our integrated approach delivers less complicated, less stressful and more personal experiences for members.

**OhioHealth<sup>y</sup> makes it affordable, accessible, and simple. To learn more, contact your broker.**