

# Accessibility

**Premier Network**  
More of what you need.  
Less of what you don't.



## Better Integration

The OhioHealthy Premier Network is designed to provide exceptional care where you need it most. Our unique integration with OhioHealth offers your employees access to quality care at substantially lower cost. Bringing provider and plan together maintains high quality care, reduces waste and reduces cost.

## Better Access

The OhioHealthy Network is a collective of OhioHealth Physician Group and independent providers, hospitals and facilities working together to transform healthcare in Ohio. The network includes more than 6,000 professionals, 22 hospitals and more than 400 ancillaries including local providers affiliated with OhioHealth Clinically Integrated Network (CIN), Central Ohio Primary Care (COPC), Nationwide Children's Hospital and the Cleveland Clinic.

## Better Care

Physicians and hospitals in the Premier Network are rewarded for quality, efficiency, keeping people healthy and improving the health of people with chronic conditions. Our providers work together to coordinate care and share data that helps them provide the right care at the right time.



### Simplicity

Expert support, less complexity,  
better member experience



95% member satisfaction

**SAME DAY** primary care

**24/7** Nurse Advice Line

**MEMBER ADVOCATES**

**VIRTUAL HEALTH**, telehealth




**MOBILE APP**

Treatment **COST CALCULATOR**

# PREMIER NETWORK

## FAST FACTS

 **More than 6,000** Providers

 **9** Behavioral Health Facilities


 Central Ohio Primary Care (COPC)

 **22** Hospitals

 Over **400** Ancillaries

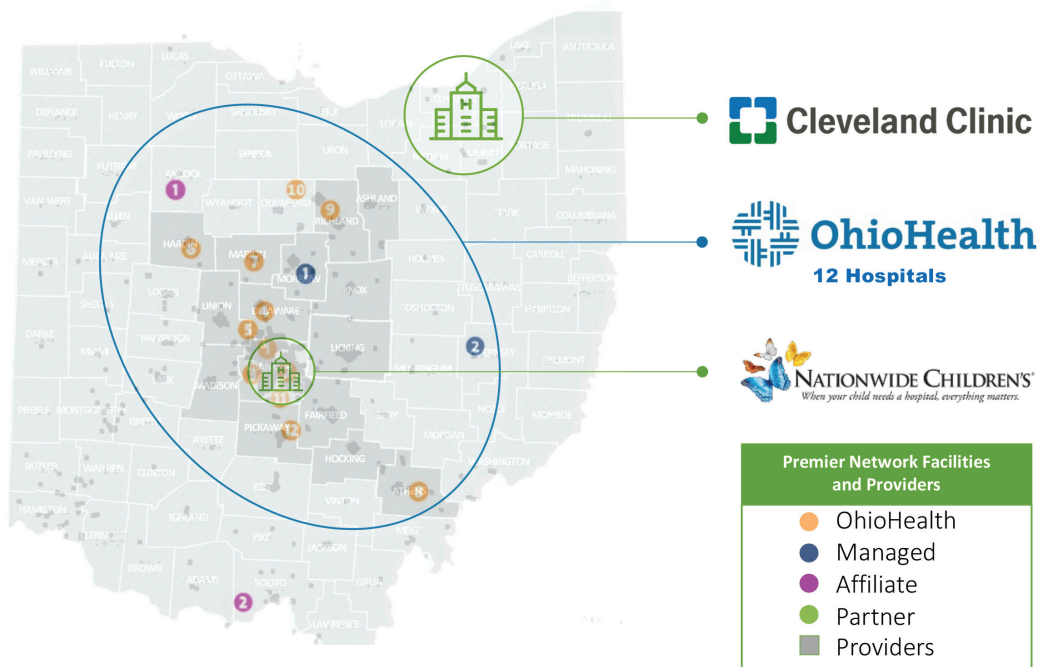
 **Cleveland Clinic**

 **Nationwide Children's**

 Clinically Integrated Network (CIN)

## Access to high quality care

- OhioHealth Clinically Integrated Network and Central Ohio Primary Care.
- Specialty service agreements with Cleveland Clinic and Nationwide Children's Hospital.
- World Class Cancer Care. OhioHealth treats all of the most prevalent cancers.



## ABOUT OHIOHEALTH



**CENTRAL OHIO'S LARGEST AND MOST PREFERRED HEALTH SYSTEM.**<sup>1</sup>

1. 2022 OhioHealth Attitude and Usage Study

RECOGNIZED BY **FORTUNE**

as one of the "100 Best Companies to Work For"



A FAMILY OF **35,000**

associates, physicians and volunteers.

## A NETWORK OF



**12** hospitals



**200+** ambulatory sites, hospice, home-health, medical equipment and other health services



spanning a **47** county area

